

Creating Data Collections

Creating Data Collections

What Is a Data Collection?

Data Collection

A set of data fields from (possibly) different tables in (possibly) different data connections

A data collection has the following features:

- provides a convenient way to group related data fields from cross data sources
- proves to be beneficial in data governance efforts (for example, these are all of the phone number fields)
- can be used as an input source for profiles

6



Working with Collections in Data Management Studio

selected collection

two collections in Basics Demos repository

Data riser bar

Name	Table	Database	Type	Length	Description
ADDRESS	Customers	dfConglomerate Gifts	Character	1073741	
ADDRESS	Employees	dfConglomerate Gifts	Character	1073741	
CONTACT_ADDRESS	MANUFACTURERS	dfConglomerate Grocery	Character	255	
SHIP_ADDRESS	Orders	dfConglomerate Gifts	Character	1073741	
STREET_ADDR	MANUFACTURERS	dfConglomerate Grocery	Character	255	
CITY	Customers	dfConglomerate Gifts	Character	50	
CITY	Employees	dfConglomerate Gifts	Character	50	
CITY	MANUFACTURERS	dfConglomerate Grocery	Character	50	
CONTACT_CITY	MANUFACTURERS	dfConglomerate Grocery	Character	50	
CONTACT_CITY	Orders	dfConglomerate Gifts	Character	50	
CONTACT_CITY	MANUFACTURERS	dfConglomerate Grocery	Character	255	
CONTACT_CITY	MANUFACTURERS	dfConglomerate Grocery	Character	50	
CONTACT_CITY	MANUFACTURERS	dfConglomerate Grocery	Character	10	
CONTACT_CITY	MANUFACTURERS	dfConglomerate Grocery	Character	20	
CONTACT_CITY	Orders	dfConglomerate Gifts	Character	50	
CONTACT_CITY	Customers	dfConglomerate Gifts	Character	15	
ZIP/POSTAL CODE	Employees	dfConglomerate Gifts	Character	15	
CONTACT_STATE_PROV	MANUFACTURERS	dfConglomerate Grocery	Character	25	
CONTACT_STATE_PROV	Customers	dfConglomerate Gifts	Character	50	
CONTACT_STATE_PROV	Employees	dfConglomerate Gifts	Character	50	
CONTACT_STATE_PROV	Orders	dfConglomerate Gifts	Character	50	
SHIP_STATE/PROVINCE	Orders	dfConglomerate Gifts	Character	50	




Data collections are created in the Data riser bar in Data Management Studio and are stored in a repository.



Creating a Collection of Descriptive Fields


This demonstration illustrates the steps that are necessary to create a collection of descriptive, or note, information.

1. If necessary, access Data Management Studio.
 - a. Select **Start** ⇒ **All Programs** ⇒ **DataFlux** ⇒ **Data Management Studio 2.7**.
 - b. Click **Cancel** to close the Log On window.
2. Verify that the **Home** tab is selected.
3. Click the **Data** riser bar.
4. Expand **Collections**.
5. Create a new collection of note information.
 - a. Click the **Basics Demos** repository.
 - b. Click  (**New Collection**).


Note: You can also create a new collection by right-clicking the **Basics Demos** repository and selecting **New Collection**.

- c. Enter **Descriptions** in the **Name** field.
- d. Enter **Collection of Descriptive Fields** in the **Description** field.
- e. Click **OK**.

The new collection appears on a tab.

6. Insert descriptive fields from the dfConglomerate Gifts and dfConglomerate Grocery data connections.
 - a. Click  (**Insert Fields**).

The Insert Fields window appears.

- b. Add notes fields from the dfConglomerate Gifts data connection.
 - 1) Click  (**Select Database**) next to the **Connection** field.
 - a) Select the **dfConglomerate Gifts** data connection.
 - b) Click **OK**.
 - 2) Add fields from the **Customers** table.
 - a) Expand the **Customers** table.
 - b) Click the **NOTES** field. (Select the check box.)
 - c) Click **Add**.
 - 3) Add fields from the **Employees** table.
 - a) Expand the **Employees** table.
 - b) Click the **NOTES** field. (Select the check box.)
 - c) Click **Add**.

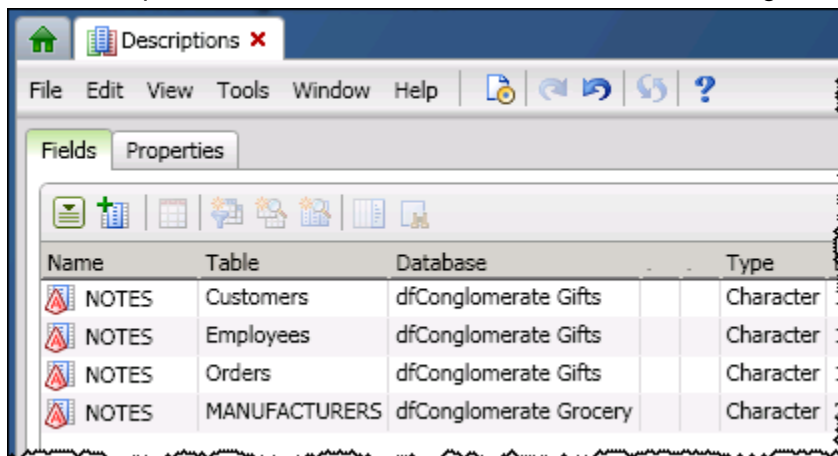
Only the **NOTES** field from the **Employees** table is added to the collection.

- 4) Add fields from the **Orders** table.
 - a) Expand the **Orders** table.
 - b) Click the **NOTES** field. (Select the check box.)
 - c) Click **Add**.

Only the **NOTES** field from the **Orders** table is added to the collection.

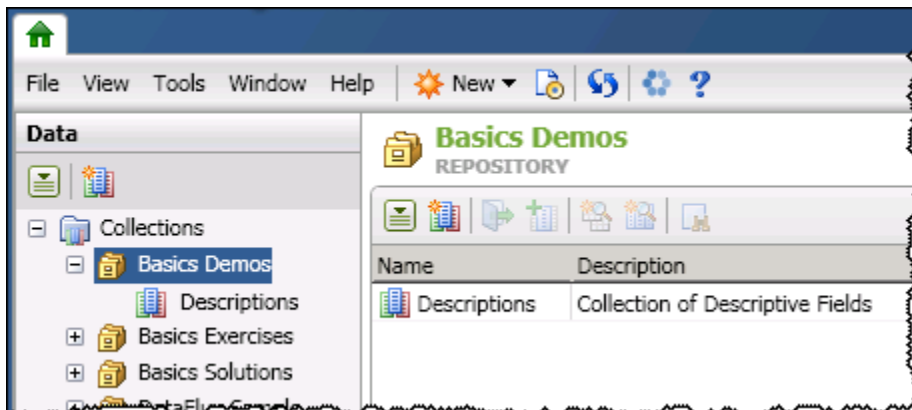
- c. Add **NOTES** fields from the dfConglomerate Grocery data connection.
 - 1) Click (**Select Database**) next to the **Connection** field.
 - 2) Select the **dfConglomerate Grocery** data connection.
 - 3) Click **OK**.
 - 4) Add fields from the **MANUFACTURERS** table.
 - a) Expand the **MANUFACTURERS** table.
 - b) Click the **NOTES** field. (Select the check box.)
 - c) Click **Add**.
 - 5) Click **Close** to close the Insert Fields window.

The Descriptions collection should now resemble the following:



7. Select **File** ⇒ **Close Collection**.

The Descriptions collection is displayed for the Basics Demos repository.



End of Demonstration